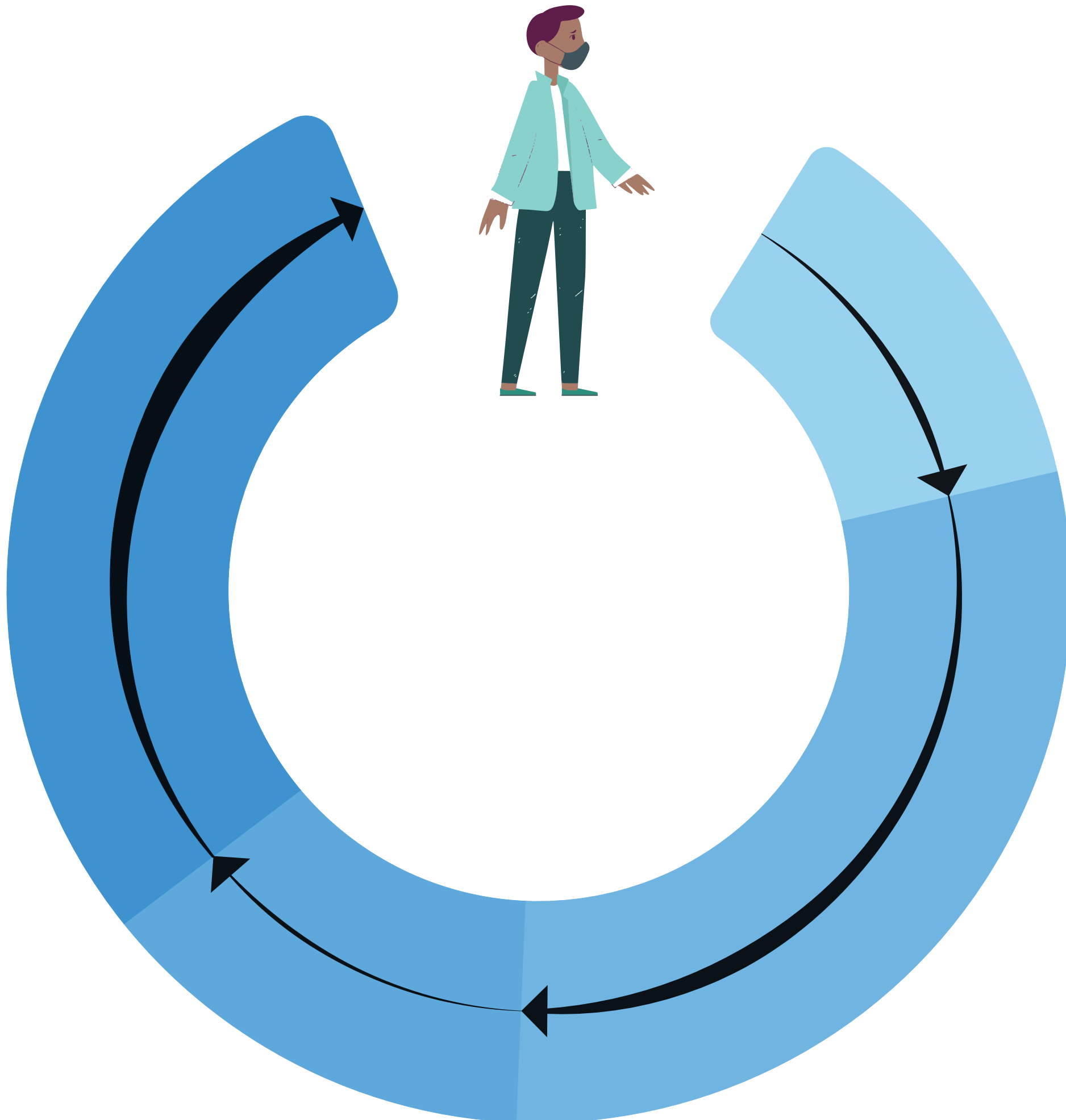


COVID-19 Trusted Attribute Exchange Participant Information Sheet



What is this research project about?

A trusted attribute is a fact that has been verified by a person or organisation so that it is trusted and can be used as a token to transfer that piece of information between people and organisations. Trusted attributes could enable a citizen's seamless access to local authority services. As an example, a driver's licence is a trusted attribute that we are probably all familiar with. This research project is about a new form of trusted attribute exchange model that should create, verify and transfer trusted attributes relating to covid-19 automatically on the citizen's behalf.

The research is a small part of a larger research project looking at trusted attribute exchange for all kinds of attributes. This project is focussed only on attributes and services relating to covid-19.

What does this research project involve?

We are inviting you to contribute to a research project which will run for approximately 3 months. We will hold a small number of interviews with people who have had a positive covid-19 test or who consider that they have had covid-19 without a test. We will also run two co-design workshops. The interviews and workshops will be attended remotely through on-line collaboration tools. The workshops will be attended by health and care professionals, industry partners, academics and policy makers. Interviews will be with any adult Scottish citizen who has had covid-19.

The interviews will provide real-life experience of having to access government services related to covid-19. At the workshops we will consider these experiences and co-design preferable future Scottish Government services using a trusted attribute exchange.

For the interviews and workshops we will use visual tools to build a rich narrative of your perspectives, experiences and insights related to accessing services pertinent to covid-19 and/or trusted attribute exchange services.

How can we hold interviews and workshops remotely?

We will use [Microsoft Teams](#) and [Miro](#) for the interviews and workshops. Microsoft Teams is an online collaboration tool that enables several people to talk and see each other over the Internet. Miro is an online shared whiteboard that allows several people to all see and edit the same text and drawings. Microsoft Teams and Miro will be accessed through a unique link sent by the researcher by e-mail to interviewees and workshop participants. The link will open a web-page when clicked. Interviewees and workshop participants do not need to be technically proficient but would need to read an e-mail and click a link on a computer, tablet or phone and have an Internet connection sufficient to support a typical TV streaming service. After the workshops and interviews the links to Microsoft Teams and Miro will be disabled.

Who is organising and funding the project?

This research project is funded by the Digital Health & Care Innovation Centre (DHI), which is a Scottish Funding Council initiative between The Glasgow School of Art and The University of Strathclyde. The research has been requested by the Scottish Government who are partners on the project. Research output will be shared with the Scottish Government during and after the project has finished.

The DHI aims to bring together health, care and third sector professionals, academics and industry partners to work together to develop innovative ideas to overcome health and social care challenges.

This research project is being led and organised by researchers from the Innovation School at The Glasgow School of Art as part of the DHI.

The Innovation School are based in Glasgow and Moray. Our research involves working with health and care professionals, policy makers and the public to explore challenges in health and social care to come up with new ideas for improving services here in Scotland.

The ALLIANCE are helping to find interviewees for this research.

Why have you been invited?

You have been invited because you can contribute knowledge that will help co-design the future of trusted attribute exchange services in Scotland. If you have any additional needs that will help you contribute to this research project then please let us know. Taking part is your decision and it is entirely voluntary. You can also withdraw at any time, without giving a reason.

If you would like to be involved, you will be asked to sign a Consent Form confirming that you understand the purpose and methods of the research and are happy to participate. This will be requested at the start of each research activity.

What will happen to the information you provides?

The information you provide, with consent, will be used by the research team to produce a report for the Digital Health & Care Innovation Centre. The information could also be used for *research purposes* such as at exhibition, in publication, academic journal articles, conference papers and presentations, lectures, on web-sites or broad-cast media.

The information you provide may also be *available to the public* according to your consent. For example, on social media and on web-sites.

We would like to record audio during the interviews and workshops with your consent. The recording will be transcribed for research purposes.

Your information will be held in accordance with The Glasgow School of Art Data Protection Policy. All study data will be held under secure conditions at the Glasgow School of Art (GSA) Highlands and Islands Campus (Forres) for a period of 5 years. Paper records will be destroyed after 5 years. Access will be restricted to the researchers. Only professional identifiable information (e.g. your title & role) will be used unless you have waived your anonymity on the consent form. No personal identifiable information will be used in any publication without your consent.

The GSA will only share project data with The University of Strathclyde who are partners in the DHI. For more information about how the GSA will store and process your data, please contact: c.green@gsa.ac.uk

Who should I contact for further information?

Dr Jay Bradley (j.bradley@gsa.ac.uk) or, Gemma Teal (g.teal@gsa.ac.uk)

The Glasgow School of Art, Highlands and Islands Campus, Blair's Farm Steading, Altyre Estate, Forres, IV36 2SH

If this study has harmed you in any way or if you wish to make a complaint about the conduct of the study you can contact GSA using the details below for further advice and information: Head of Research, The Glasgow School of Art, 167 Renfrew Street, G3 6RQ; research@gsa.ac.uk

To see more of the research team's projects: futurehealthandwellbeing.org
To find out more about the DHI: dhi-scotland.com